

R.S. PRUSSIA

Issue Number 65

I.A.R.S.P.C. Inc.

June 2004



Indianapolis 2004



**The International Association of
R.S. Prussia Collectors Convention**

Indianapolis Marriott East

(317) 352-1231

**Make your hotel reservations by July 1. Room
Rate is \$92.00 plus tax. Call Today!**

Free Night Drawing:

**Register For Convention By July 1 To Be
Eligible For The Free Night Drawing.**

Fund Raiser Raffle:

**The Club Has Acquired Some Beautiful Pieces
To Be Ruffed. Raffle Tickets Can Be Purchased
At Convention. If Unable To Attend,
Contact Terry Coy For Tickets!**

*Remember To Bring Your
Lanyard/Name Tag*



In This Issue

Notes from the President

George Kandel 2

Notes from the Secretary & Treasurer

Linn & Leslie Schultz 3

Do It Yourself Auction

..... 3

Gabby's Convention Diary, Part IV

Gabby 3

Canadian Collection

Ken Jinde 4-5

Prussia In the Web

John Titus 6-7

China Toothpick Holders

Judy Knaver 8

You Paid What...?

Annette Hite 8

Do It Yourself Chairman does "The Jump"

Howard Greenberg 9

R.S. Prussia and Related China Auction

..... 10-14

New Members

..... 14

Convention Information 15-16

*The International Association
of R.S. Prussia Collectors, Inc.
Visit Us At
<http://www.rsprussia.com>*

President

George Kandel, Indiana
260-868-5263
vinmark@fwi.com

Vice President

Terry Coy, Kentucky
502-244-5391
user258442@aol.com

Secretary

Leslie Schultz, Iowa
563-678-2658
lschultz@netins.net

Treasurer

Linn Schultz, Iowa
563-678-2658
lschultz@netins.net

Past President

Jenny Lou Huston, Texas
210-494-2791
phust@swbell.net

Directors

John Titus, Iowa
563-785-4438
imagesinink@iowatelecom.net

Marlene Howard, Ohio
513-777-1074
dhoward5@cinci.rr.com

Assid Corban, New Zealand
64-9-838-8947
orchids@xtra.co.nz

Wanda Krick, Tennessee
931-393-1015
joekrick@charter.net

Marvin Kraus, Nebraska
402-947-7111
mkkraus@hotmail.com

Lee Marple, California
408-253-1739
lwmarple@aol.com

Recording Secretary

Theresa Newcomer, Pennsylvania
717-653-5976
chocset@aol.com

Historian

Mary Lou Bougher, Kentucky
502-247-7155
mlkbougher@msn.com

Newsletter Editor

Linda Titus, Iowa
Phone 563-785-4438
Fax 563-785-4673
PO Box 983, Durant, IA 52747-0983
email: imagesinink@iowatelecom.net

Web Page Editor

Ken Jinde, Canada
kenj89@rogers.com



Notes from the President



George Kandel



Convention time draws near and your reservations should be made. The last day the hotel will guarantee room rates will be July 5th. The site is centrally located with 7 major interstate highways that connect with every interstate system in the country, plus a major airport that connects with all parts of the world. This makes it as easy to get to as any of our convention locations, plus great facilities. Don't miss out on this convention.

Remember that display tables need to be reserved through the hotel and the hotel will decide on the size of 6 foot or 8 foot tables. There is a limited amount of the latter so I suspect the earlier arrivals will fare best.

The various state clubs are busy getting ready for future conventions. The Heartland Club has finalized the menu and arranged for the hospitality room at the Kansas City site in 2005. They will make a brief statement at one of the meetings this year. Energized they are.

The Illinois club has recommended a hotel in the Peoria, Illinois area for the 2007 convention. The Vice President and I, along with our wives, will meet with state chairman Fred Kunz and hotel representatives on June 23rd for discussions, inspection and finalization of the contract. They have formulated an attractive package.

I will relate the findings at this year's convention.

The Michigan club, host at Novi, Michigan for 2006, is going through a somewhat common occurrence as the hotel person with whom we have been dealing has received a promotion and a replacement has been announced. I have been unable to make contact as of yet but should accomplish this shortly.

The Kentucky-Tennessee club is already looking at a possible location of the 2008 site. You can see that activities abound as we approach summertime.

In the next few weeks auctions are scheduled by both Wroda and Woody auction companies. They continue to arrange interesting sales of quality pieces and keep our interest in R.S.Prussia at a high level. Nothing educates like a spirited, competitive sale.

I would appreciate a short note as to where and what your experiences have been lately and if you have any concerns or ideas for improvement that would benefit the organization. One last thought. If unable to attend this year's convention, have you purchased your chances on the beautiful items Terry Coy has obtained for the raffle?

*See you in Indianapolis
George Kandel*

Newsletter Policy

This newsletter is the voice of the members of the International Association of R.S. Prussia, Inc. We welcome articles from members. We ask that articles be constructive and contribute positively to the welfare of the club and its members. The newsletter is printed four times a year. Publication mail dates are February 15, April 15, June 15, and October 15. Articles submitted for publication are due to the editor by the 15th of the month prior to publication and are subject to editing. (For example, items for the April issue would be due by March 15th) We look forward to hearing from you!



Notes from the Secretary and Treasurer

Linn & Leslie Schultz

Notes from the Secretary & Treasurer:

Pre-registration for the International Convention in Indianapolis is underway. Thanks to all of you who have already pre-registered!! If you haven't sent in your registration form, be sure to do so before July 1 to be eligible for the drawing for **one night paid lodging!** Please remember that the registration fee is non-refundable, but if you have paid for any of the meals and need to cancel, this must be done by noon on Wednesday, July 29, in order to receive your refund. You can always reach us by phone at 563-678-2658 or email at lschultz@netins.net.

Linn & Leslie Schultz
Secretary & Treasurer



Do It Yourself Auction

\$25,000 Total raised for the club after the 10th annual "Do it yourself auction" last year.

\$3,060.00 was raised last year at the 2003 convention, second only to \$3,500 six years ago. C.L and Lavonne Riley, and Jack and Joyce Williams passed to \$1,500 donation level and close behind, Selma Greeley and grandson Ben Thompson. A new single piece record was established by June, Travis and son Matt Wroda who donated a beautiful RSP cobalt charger that auctioneer Matt sold for \$650.00 (great job Matt). It was bought by Milo and Sandy Medvin who are extremely happy with the plate.

This year's convention will certainly find the Rileys, Williams and Wrodas with donations. CAN YOU ALSO HELP? Assid and Miriam Corban will make everybody laugh with their auctioneering duties. Thanks also goes to the Corbans for the beautiful orchids grown in New Zealand donated last year.

Enjoy an hour of fun and laughter at the DO IT YOURSELF AUCTION this year, where everybody benefits.

Howard Greenberg

Committee

C.L. Riley, Jack Williams, Selma Greenberg, Francis & Terry Coy, Mary Lou Baugher, Ben Thompson, Harold Dobbs Jr. and Matt Wroda.



Gabby's Convention Diary 2003 Part IV

Dear Diary:

It's Sunday morning and I haven't been fed or watered yet—I demand better service than this!! Who are they that they think they can ignore me. Last night I heard someone mention going to Kentucky Fried Chicken, but then someone else said that they didn't have to go that far—parrot tastes like chicken! Well, I never thought that things would come to this! Just let someone put one finger in this cage and they will sure find out who they're dealing with!!

I hear someone at the door—it's that hot shot from Iowa again. Wait, he's telling me that Frank is Ok and that we will be going home today!!! *Oh Frank, I love you so!* Now I'm being carried down to the lobby—but where is Frank? No, don't give my cage to this Bowser guy—I heard that he has a CAT!! Those two Kunz people from Illinois said that they could help drive Frank and I back home if he can't drive. Now they're talking about Frank again. Something about eating the wrong things? An ulcer? Glad I didn't have any of that pepperoni, hard salami, or adult beverage!!! I'm so excited—they just released Frank from the hospital and he is going to drive us home. *Oh, Frank, I love you so!!*

Of course, I will have to be very indifferent to Frank for at least a week—that way he will realize how badly he has mistreated me. Frank mentioned that he is going to another Prussia Convention in Indianapolis. If he's going, he can take Denise. I'm staying home!! *Oh, Frank, I love you so!!!*

Love, Gabby

Editor's Note: And so ends Gabby's Diary from last year's convention. We can only wonder what adventures Frank has in store for Gabby this year!!

ELECTION 2004

If anyone is interested in running for a position as a board member, please contact any one of the following

Nominating Committee members:

Bob McCaslin - Indiana
Jane Fawcett Stork - Texas
Frank A. Huber - Illinois

THE CANADIAN COLLECTION

Photos of RS Prussia, RS Germany Items found in Canadian Collections

Submitted by Ken Jinde



THE CANADIAN COLLECTION

Photos of RS Prussia, RS Germany Items found in Canadian Collections





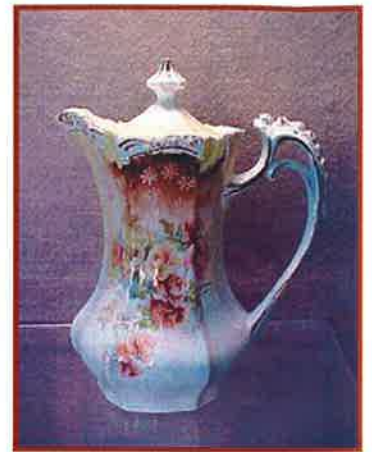
Prussia "In The Web"

by John Titus

NOTE: Some pieces did not meet their reserve.



11 1/2" Floral Bowl \$349.99



Rosebud Chocolate Pot
\$149.00



Biscuit Jar \$146.25



Fowl Scene Vase
\$1026.00



Floral Cake Plate \$295.00



Cake Plate \$150.00



Floral Chocolate set
\$380.00



Melon Eaters
Chocolate pot
\$2850.00



Turkey Vase \$711.99



Floral Celery \$99.95



Floral Tea Set \$350.00



Potocka Vase \$987.77



4 1/4" Fowl Scene Vase \$202.50



10 1/2" Floral Tankard \$621.77



11 3/4" Portrait Plate \$675.00



Castle Scene Creamer \$208.49



Floral Coffee Set \$599.00
1 cup repaired hair



Turkey Cracker \$750.00



11 3/4" Carnation Bowl \$357.99



10" Portrait Bowl \$555.00



Poppy Cake Plate \$89.68



Floral Cake Plate \$150.00



Jeweled Dresser Tray \$210.00



Floral Cracker \$166.29
repaired



Icicle Mold Waterlily Celery \$208.50



4" Floral Vase \$158.50



Fowl Scene Tea Set \$485.00 rim chips



Floral Celery \$192.49

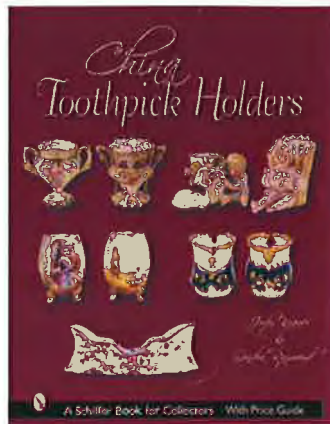
China Toothpick Holders

Submitted by Judy Knauer

Announcing the availability of a new collector's reference book on China Toothpick Holders.

This exciting new reference is the first of its kind. No other publication focuses exclusively on porcelain toothpick holders. Collecting toothpick holders has long been a popular hobby, and now it will be even more enjoyable! This reference includes over 600 color photographs and shows over 900 toothpick holders.

Whether your interest is in R. S. Prussia, Royal Bayreuth, Nippon, Royal Doulton, or any other type of porcelain, you will find this



reference is a "must have." The photos clearly represent the colors and the design details that make these toothpick holders the treasure they are.

In this reference you will also find collecting tips, information on manufacturers, identification tips, reproduction and contemporary toothpick holders, a glossary, current values, and much more.

Both authors, Judy Knauer and Sandra Raymond, are long-time collectors and students of antique toothpick holders. Judy founded the National Toothpick Holder Collectors Society in 1973 and both authors have been active members since that time.

Orders are now being taken for summer delivery - \$39.95 + \$3.95 for insured mailing.

Order from:

Sandra Raymond
1328 Old Cherokee Road,
Lexington, SC 29072

Questions?? Contact the authors at chinatps@comcast.net or visit our web site <http://home.sc.rr.com/heartsdesire/book.htm>



You Paid What...?

Submitted by Annette R. Hite

Grady is the shopper in our family (except for birthday gifts, toiletries, and household necessities). He does love to shop for "keepers," merchandise and junque (the latter having myriad definitions).

He was so proud of his zealous e-bay pursuit of a piece of Prussia...a Season cake plate! He got it for a very respectable, if not cheap, price. He is so conscientious about paying for an item ASAP and having it shipped in a like manner. In this instance the seller would not communicate with him after the auction "closed." Grady wanted to be advised for the preferred payment option and mailing expectations. Frustration after numerous emails over several days were not answered, Grady searched ebay to determine the seller's name, location and phone number. Unfortunately his first calls were answered by a machine but it occurred to him that his was a junque/antique shop we had once shopped in Centervillecity (not its real name) because one of our sons lives there. He then determined that a good time to get a human on the phone would be during the antique store's normal hours (likely not on a Monday like his earlier calls). Finally after many more tries, a human is on the line! This human, however, does not want to discuss the

Prussia plate! "That has not been sold nor is it for sale!" he said. Perhaps he had changed his mind after a better offer. Who knows? Grady reminded him succinctly of his contract with ebay when an item is offered for sale. He was not being persuaded, but Grady was adamant, saying "I bought it 'fair & square' and I want the plate!" Equally adamant the seller said, "I'll only accept cash" (you must understand the shop is over 1,200 miles from us). Grady, of course, said that he does not send cash through the mail. The seller said, "Cash only!" Grady said, "Fine you'll have it! You'll have it in two hours!"

"Two hours?"

"Have the plate ready!"

Grady hangs up the phone; he dials another number. Our son in a highrise office building in Centervillecity answers. Brief pleasantries and then Grady says, "Walk over to your window. Do you see the building with an orange protrusion on its roof, about three blocks away?" Our obedient son did. "I bid and won a Prussia plate that the dealer in that junque shop (under the orange protrusion) will not release to me until he has \$400.00 in cash!" Our son probably thought, you paid what?!?!?...but immediately said, "when do you want me to get it...there's an ATM in our lobby."

Grady said, "I just told him you'd be there within two hours. Go to his shop but keep the cash visible in your hand, inspect the plate and when you are satisfied that is in good shape, pay him. Do not hand the plate back but mail it to me yourself since he might decide to keep both the plate and the cash!"

Thirty minutes later a call confirmed our family was "in possession" even though the dealer had still tried to squash the deal!

A mother's ASIDE: This son used to wear quirky teenage clothes and once when I chided him he responded, "Oh, Mom this is just a stage. One of these days I'll wear a three piece suit and you'll be so proud!" Well, the seller didn't have the privilege of seeing a three piece suit but the two piece one was just fine! Attorneys can be hard to argue with, especially when they represent their parent!

Notice to Members:

The Lemons have changed their email address to:

imalemon@cox.net

Please update your membership roster.

Do It Yourself Chairman does "The Jump"

Editors Note: The following article is taken from the Army Times website. Howard has a piece of Prussia that will be sold at the auction that survived the jump!

Submitted by Howard Greenberg

June 02, 2004

WWII vets to parachute into Normandy — even without DoD permission

Associated Press

CLEVELAND — An area World War II paratrooper and 10 other veterans aren't waiting for the Pentagon's approval to commemorate the 60th anniversary of the Allied invasion of France this month by parachuting into Normandy.

Howard Greenberg, of Bay Village, and the veterans will re-enact the airborne invasion, but they will jump June 7, a day after D-Day.



Howard Greenberg, pictured here after jump school in 1944, served with the 11th Airborne Division in World War II. He planned to join 10 other Airborne veterans on June 6 to parachute into Normandy to commemorate the 60th anniversary of D-Day, but the Army turned down their request. Greenberg, a retired optometrist from Bay Village, jumped into France 10 years ago on the 50th anniversary of the Allied invasion.

"I am really looking forward to it," said Greenberg, 79, who served with the 11th Airborne Division in the Pacific.

"Though we would rather jump on the anniversary, I think it's important to send a message that a lot of Americans lost their lives over there on D-Day." They had hoped to be part of the anniversary in France on June 6, as they were at the 50th anniversary in 1994. But the Army decided last month that the parachute drop would be too dangerous for the veterans who all are in their 70s and 80s.

"The Army still wants no part of it, but the French government gave us the OK to jump on June 7, so that's what we are going to do," said Richard Mandich, president of the Return To Normandy Association. "I have to admit it makes us feel like second-class citizens."

Greenberg was among the group of veterans wanting to jump into Normandy 10 years ago who faced similar obstacles, but President Clinton allowed the 38 veterans to jump near Ste.-Mere-Eglise, the D-Day



WWII veteran Howard Greenberg, 79, wanted to parachute into Normandy on the 60th anniversary of D-Day. (Note the Greenberg's wedding picture on the left).

objective of the 82nd Airborne Division.

The upcoming jump also will be over Ste.-Mere-Eglise.

Greenberg and the other paratroopers leave Thursday for London.

"It's our last chance to make this statement," said Mandich. "I don't think we'll be doing this jump on the 70th anniversary of D-Day."

Mandich, of San Diego, said the group is short of the estimated \$50,000 needed to pay for the tribute.

"We've raised \$3,000 in cash and have a pledge to pay for the rental of an airplane and the parachutes," he said. "We're hoping to raise the rest of the money to pay for airfare, hotels and expenses for the men. They will pay for the trip themselves and get reimbursed as we get in the funds."

Vets went ahead and Jumped!



U.S. WWII Paratrooper veterans Bill Coleman (80 years old from Orlando, Florida) and Howard Greenberg (79-years-old from Cleveland, Ohio), give the thumbs-up after a jump over Sainte Mere Eglise in Normandy, June 7, 2004.

R.S. Prussia And Related China Auction

Saturday, April 17, 9:30 A.m. - 2004

St. Louis, Missouri

PRICE LIST

- 1 100 9 1/4" Rsp Leaf Mold 10 Plate - Green Tones W/ Pink Floral Decor
- 2 140 11 3/4" Rsp Stipple Mold Dresser Tray - Green & Yellow Tones W/ Pink Rose Decor
- 3 125 11 3/4" Rsp Mold 18 "Ribbon & Jewel" Dresser Tray - Cream Background W/ Rose & Daisy Decor - Green & Gold Border W/ Light Blue Highlights - Opal Jewels
- 4 80 11 1/4" Rsp Iris Variation Mold Two Handled Cake Plate - Cream & Green W/ Poppy Decor
- 5 400 Pair 9" Rsp Jewel Mold 936 Cylinder Shaped Vases - White, Green & Gold Luster Finish W/ Pink & White Rose Decor - Opal Jewels
- 6 100 Rsp Footed Mustache Cup - Light Green W/ Pink Rose Decor Inside & Out - Satin Finish - Similar To Mold 501
- 7 350 6" Rsp Milk Pitcher - Yellow W/ Tiffany Finish Border - Small Floral Decor -satin Finish
- 8 30 Unmarked Prussia Pedestal Cup & Saucer - Yellow Background W/ Pink Floral Decor
- 9 40 7 1/2" Rsp Mold 151 Plate - Brown Tones W/ White Poppy Decor
- 10 300 Rare (3) Piece Rsp Mold 601 Pedestal Tea Set - Cream & Lavender Satin Finish W/ Pink Rose Decor - Tea Pot, Creamer (Tiny Hairline), And Sugar-nice Set
- 11 45 6 1/2" Rsp Handled Oval Nappy - Light Blue W/ Pink Rose Decor
- 12 150 5" Rs Poland Hatpin Holder - Pink, Gray & Green Colors W/ White Floral. Decor-nice Shape
- 13 200 4 1/4" X 8 1/4" Rsp Footed Ferner W/ Original Insert - Light Yellow W/ Brown-blossom & Leaf Decor
- 14 400 5 1/2" Rsp Vase - Green Tones W/ Cobalt Blue Trim - Double Cottage & Mill Scenes - Very Nice!
- 15 300 12" Rsp Mold 207 Celery Tray Masted Schooner Scenic Decor On Pearlized Luster Finish - Nice
- 16 50 9" Rsp Mold 704 Chocolate Pot - White W/ Green Laurel Chain Decor Pro Repair To Top
- 17 300 4 1/4" X 7" Rsp Pedestal Bowl - Green Tones, Swan & Gazebo Decor
- 18 210 10 3/4" Unmarked Prussia Mold 4 (Hidden Image) Two Handled Cake Plate - Green Tones, Pink Highlights
- 19 250 3 3/4" X 8" Rsp? Mold 879 Ferner - White W/ Tiffany Border And Ivy Decor -satin Finish
- 20 200 8" Rsp Mold 82 Oval Shaped Relish Tray - Green Tones, Melon Eater **Decor - Nice**
- 21 400 9 3/4" Rsp Sunflower Mold Chocolate Pot W/ (4) Matching Cups And Saucers-white W/ Leaf & Blossom Decor - Luster Finish
- 22 4 3/4" Rsp Skirted Hatpin Holder - White & Light Green W/ Pink Rose Decor
- 23 150 4 1/2" Rsp Mold 728 Hatpin Holder - Cream & Pink Colors W/ Spilled Basket Decor
- 24 160 11 1/4" Rsp Mold 259 Two Handled Cake Plate - Green Tone Background W/ Snowball & Floral Decor - Gold Trim Highlights
- 25 575 Nice! 8 1/2" Rsp Two Handled Cylinder Shaped Vase - Green Tones Old Man In The Mountain Scenic Decor! - Mold 914
- 26 60 3 3/4" Rs Poland Two Handled Miniature Vase - Brown Tones, Yellow Rose Decor
- 27 60 3 3/4" Rs Poland Two Handled Miniature Vase - Brown Tones, Pheasant Decor - Pro Repair
- 28 300 Rare! 9 3/4" Unmarked Prussia Mold 204 Two Handled Cake Plate -lebrum li Portrait Surrounded By Green Luster Background W/ Gold Highlights
- 29 175 6 3/4" Unmarked Prussia Floral Mold Cracker Jar - Blue & White W/ Wild Floral Decor
- 30 375 7" Unmarked Prussia Mold 909 Vase - Green Tones W/ Dice Throwers Scenic Decor
- 31 40 3 1/2" Unmarked Prussia Bell - Green Tones W/ Pink Rose Wreath Decor -luster Finish
- 32 25 Rsp Octagon Shaped Coffee Cup - Brown Tones, Melon Eater Decor
- 33 90 6" Rsp Mold 98 Plate - Brown Tones W/ Mill Scene Decor - Some Paint Wear
- 34 1300 12 1/4" Rsp Ribbon & Jewel Mold Celery Tray - Iridescent



- Green Background W/ Heavy Gold & Opal Jewels - Melon Eater Decor - Extra Nice!
- 35 625 8 1/4" Rsp Two Handled Corset Shaped Vase - Brown Tones, Castle Scene Decor - Jewel Mold 921
- 36 175 3" Unmarked Prussia Melon Shaped Salt & Pepper Shakers - Green Tones -castle Scene Decor - Nice Pair!
- 37 180 4 1/4" Rsp Mold 910 Vase - Green Tones W/ Castle Scene Decor
- 38 20 Unmarked Prussia Mustard Jar - White & Blue W/ Wild Floral Decor
- 39 120 13 1/2" Rsp Mold 9 "Fleur- De-lys" Celery Tray - Dark & Light Green W/ White Magnolia Decor
- 40 2000 Extremely Rare! 10 1/4" Rsp Two Handled Vase - Cream, Brown & Aqua Border Colors W/ Nice Gold Highlights - "Belles Of Linden" Scenic Decor - Have You Ever Scene One?
- 41 40 9 1/2" Rsp Mold 300 Relish Tray - Green, Yellow & White W/ Snowball & Rose Decor
- 42 350 3" Rsp Mold 907 Ball Shaped Vase - White W/ Scenic Band Of Chicken & Ducks
- 43 200 7" Rsp Fancy Mold Two Handled Vase - White & Peach Color W/ Pink Poppy Decor - Satin Finish!
- 44 275 8 3/4" Rsp Mold 300 Plate - Brown Tones W/ Melon Eater Scenic Decor
- 45 525 9 1/2" Unmarked Prussia, Lily Mold Two Handled Cake Plate - Lebrum li Portrait On Green Background - Bronze Iridescent Border
- 46 70 7 1/2" Rsp Mold 155 Three Footed Bowl - Green & Cream Tones W/ Pink Rose Decor
- 47 140 10" Rsp Mold 90 Bowl - Yellow, Green & Brown Tones W/ Pink Poppydecor
- 48 110 8" Rsp Lettuce Variation Mold Bowl - Green Tones W/ White Floral Decor

- 49 90 10" Rsp Mold 507 Chocolate Pot - White & Green W/ White Floral Decor - Luster Finish
- 50 1000 Very Rare! 1" X 4 1/4" Rsp Covered Hair Receiver - Green Tones W/ Tiger Decor - Has Original Stamp On Bottom - Extra Nice!
- 51 150 6 1/4" Rsp Mold 503, Cracker Jar - Green Luster Background W/ White Dogwood Decor

- 52 50 4" Rs Poland (Prussia Mold 907) Ball Shaped Vase - Dark Green W/ Cavalier Scenic Decor
- 53 200 10 1/2" Rsp Mold 204 Master Berry & (6) Matching Berry Bowls Green Tones Fn/ Dogwood Decor - Luster Finish
- 54 50 8 1/2" Rs Prussia Plate, Mold 91, Mixed Floral, Luster Finish, Gold Trim
- 55 1800 11 3/4" Rsp Icicle Mold Tankard - Swan Scene Decor - Extra Nice!!
- 56 110 9 1/2" Unmarked Prussia Mold 256 Two Handled Cake Plate - Flossie Portrait On Green & Pink Background & White Border
- 57 375 7" Unmarked Prussia Mold 906 Vase - Brown Tones, Pheasant Decor
- 58 160 11" Rsp Plume Mold Two Handled Cake Plate - Brown Tones With Spilled Basket Decor - Pretty
- 59 30 5" Unmarked Prussia Mold 510 Syrup Pitcher - Brown & Green Tones W/ Pink Rose Decor
- 60 2600 7" Rsp Mold 909 Vase - Light Brown Tones, Rare Gazelle Decor Satin Finish - Extra Nice!
- 61 75 Rsp Mold 881 Ferner - White W/ Floral Decor
- 62 125 10 1/4" Rsp Medallion Mold Bowl - Green Tones W/ Reflecting Floral Decor
- 63 130 11" Rsp Mold 263 Bowl- Cream & Green Color W/ Pansy Highlights

- 64 150 7 1/2" Rsp Mold 155 Plate - Light Green Tones W/ Shepherders Scenic Decor - Minor Point Repair
- 65 475 11 1/2" Rsp Mold 537 Tankard - Cream & Green W/ Snowball & Rose Decor
- 66 125 4 1/4" Wheelock Prussia Round Covered Hair Receiver - Ribbon & Jewel Mold - White, Green & Cream W/ Reflecting Floral Decor
- 67 110 Rsp Mold 536 Creamer & Sugar - White W/ Green & Yellow Highlights Scattered Floral Decor
- 68 450 5 1/2" Rsp Mold 934 Vase - White W/ Tiffany Highlights - Tree & Bluebird Motif - Satin Finish!



- 69 450 11" Rsp Two Handled Cake Plate - Brown & Blue Tones W/ Swan & Castle Scene Decor - Attractive Plate!
- 70 300 10 1/2" Rsp Mold 300 Two Handled Cake Plate - Brown Tones W/ Dice Throwers Decor
- 71 200 Rsp Mold 734 Halpin Holder W/ Attached Pin Box - White W/ Pink Rose Decor - Same As Pictured In Gaston Book II, Pg.129

- 72 150 Rsp Mold 576 Creamer & Sugar - Brown Tones, Mill & Castle Scene Decor - No Lid
- 73 350 9 1/2" Rsp Ribbon & Jewel 14old Tankard - Green Tones W/ Pink Poppy Decor
- 74 1200 13 3/4" Rsp Mold 341 Celery Tray - Cream Border W/ Red Inner Border And Gold Stencil Highlights - Melon Eater Decor - Nice.
- 75 550 9" Rsp Mold 256 Bowl - Green Winter Background W/ Stag Scene Decor!
- 76 75 10 1/2" Rsp Mold 10c Two Handled Cake Plate - Cream & Green Tones W/ Pink Poppy Decor - Gold Highlights
- 77 425 10 1/2" Rsp Iris Mold Bowl - Pink & Yellow Background Colors W/ Pink Poppy Decor - Pretty!
- 78 125 10 1/2" Rsp Mold 78 Bowl - Blue, Cream & White W/ Pink Poppy Decor
- 79 75 9 1/2" Rsp Mold 151 Two Handled Plate - Brown Tones, Snowball Decor
- 80 300 11" Rsp Mold 155 Two Handled Cake Plate - Evergreen & Swan Decor Unique Yellow Luster Finish
- 81 70 8 1/2" Rsp Mold 204 Plate - Yellow & Blue W/ Floral Basket Decor Nice Gold Highlights
- 82 475 10" Rsp Mold 341 Two Handled Master Cake Plate W/ (6) Matching 6" Dessert Plates - Swan & Gazebo Scenic Decor!
- 83 320 4" X 5 1/4" Rsp Three Handled Basket - White, Green & Tiffany Finish Colors W/ White Floral Decor - satin Finish!
- 84 550 10" Unmarked Prussia Lily Mold Bowl - Cream & Blue W/ Dianna The Huntress Scenic Decor
- 85 450 9 1/4" Rsp Two Handled Tear Drop Shaped Vase - Green Tones, Fall Portrait Scene - Rim Chip
- 86 900 8 1/2" Rsp Stipple Mold Plate - Nice Light Blue Background W/ Gold Stencil Highlights - Winter Season Portrait Decor
- 87 175 4 1/2" X 5" Rsp Handled Basket - White & Green W/ Pink Rose Decor Satin Finish
- 88 125 10 1/4" Unmarked Steeple Mold 6 Bowl - Wild Floral Center W/ Cobalt Blue Border - Edge Repair
- 89 240 4 1/2" Unmarked Prussia "Hidden Image" Mold Heart Shaped Covered Hair Receiver - Light Blue W/ Small Floral Decor - Green & Pink Highlights
- 90 700 7" Unmarked Prussia Mold 918 Two Handled Vase - Brown Tones W/ Rare Ostrich Decor - Nice!
- 91 400 7" Unmarked Prussia Mold 918 Two Handled Vase - Brown Tones W/ Pheasant Decor
- 92 1200 4 1/2" X 5" Rsp Handled Basket - Brown Tones W/ Parrot Decor - Very Rare!
- 93 300 11" Rsp Fancy Mold Bowl - Soft White W/ Hanging Basket Decor, Gold Trim - Satin Finish
- 94 2100 10 1/4" Rsp Iris Mold (Bowl-n-bowl) - Dark Green & Cobalt Background W/ Pink Poppy Decor & Gold Highlights - Extra Nice!
- 95 1600 6" Rsp Jewel Mold Two Handled Vase - Green Tones W/ Parrot Decor Rare!



96 1000 Rsp Fleur-de-lys Mold Creamer & Sugar - Lavender Satin Highlights W/ Summer Season Decor - Extra Fine Pair!
 97 300 10 3/4" Unmarked Prussia Free Form Mold Bowl - Cream, Light Blue & Cobalt Blue W/ Floral Decor
 98 1200 8 3/4" Rsp Mold 261 Plate - Brown Tones W/ Hummingbird Scenic Decor - rare!
 99 575 9" Royal Vienna Two Handled Vase - Green, Yellow & Lavender Colors 1-DJ Woman Feeding Chicks Scenic Decor - Royal Vienna Mold 12 - Fine Piece!
 100 425 9" Royal Vienna Two Handled Vase - Green, Yellow & Lavender Colors W/ Woman Sitting W/ Dog Scenic Decor - Royal Vienna Mold 12 - Extra Nice!
 101 25 Rsp Mold 804 Covered Hair Receiver - White & Green W/ Pink Rose Decor
 102 150 Unmarked Prussia Mold 347 Gravy Boat & Matching Underplate - White & Lavender Satin Finish W/ Stylized Swan Decor - Pictured In Gaston Book Iv, Pg.180
 103 200 4 1/2" Unmarked Prussia "Hidden Image" Mold, Heart Shaped Covered Hair Receiver - Light Blue W/ Small Floral Decor - Pink & Green Highlights
 104 300 (2) Unmarked Prussia Mold 657 Chocolate Cups & Saucers - White & Lavender Satin Finish W/ Stylized Swan Decor
 105 1450 13 3/4" Rsp Mold 78 Celery Tray - Red Border, Poppy Decor Domes, Gold Trim Highlights - Summer Season Portrait
 106 125 Rsp Pedestal Cup & Saucer - White Satin W/ Swan & Urn Scenic Decor
 107 70 Unmarked Prussia Mold 510 Chocolate Cup & Saucer - Light Green Satin W/ Stylized Swan Decor
 108 110 8 1/2" Unmarked Prussia Mold 93 Plate - Lebrum II Portrait On Green & Pink Background And Large Pansy Decor - Lots Of Gold Wear
 109 1000 10" Rsp Mold 341 Two Handled Cake Plate - Cream Border W/ Red Inner Border And Gold Stencil Highlights - Peace Bringing Plenty Scenic Decor - extra Nice!
 110 1200 11" Rsp Carnation Mold Bowl - White W/ Lavender Highlights - Winter Season Decor - Satin Finish - Repair On Backside
 111 400 Unmarked Prussia Mold 602 Pedestal Creamer & Sugar - Green Tones W/ Duck & Evergreen Decor - Rare!
 112 180 14 1/2" Unmarked Prussia Mold 23 Divided Bowl W/ Handled - Cream & Green W/ Pink & Yellow Rose Decor - Pictured In Gaston Book Iv, Pg.53
 113 300 8 1/2" Rsp Medallion Mold Plate - Old Man In The Mountain Scene
 114 750 14" Rsp Mold 537 Tankard - Cream W/ Tiffany Finish Base - Pink & White Rose Decor - Satin Finish - Pictured In Gaston "Popular Lines", Pg.152

Gold Stencil Highlights - Medallion Portraits Of Lebrum I & II, Recamier & Potocka
 129 325 10" Rsp Mold 643 Chocolate Pot - Cream Background W/ Red & Green Trim - Scattered Floral Decor - Opal Jewels - Minor Unseen Chips
 130 300 10 1/2" Rsp Mold 211a Bowl - Yellow, Green & Pink Colors W/ Fruit Decor
 131 140 Unmarked Prussia (Steeple Mold 3) Tea Set - White, Cream & Blue W/ Wild Floral Decor - Tea Pot, Creamer & Sugar - Lid Chip
 132 350 9" Rsp Mold 643 Coffee Pot W/ Matching Cup & Saucer - Cream Background W/ Red & Green Border - Opal Jewels - Scattered Floral Decor - Final Repair
 133 150 10 1/2" Unmarked Prussia Mold 328 Bowl - Yellow & Orange Background Colors W/ Castle Scene Decor
 134 140 10 1/2" Rsp Mold 55 Bowl - Cream Center W/ Yellow Border - Pink Poppy Decor
 135 250 8 3/4" Rsp Mold 82 Plate - Cream Background W/ Red & Green Border And Opal Jewels - Water Lily & Scattered Floral Decor
 136 90 10 1/2" Rsp Bowl - White, Cream & Green W/ Rose Decor - Luster Finish
 137 175 7 1/2" Rsp Mold 82 Plate - Cream Background W/ Red Border & Opal Jewels - Scattered Floral Decor
 138 425 9 1/4" Unmarked Prussia Mold 98 Bowl - Lebrum II Portrait On Green Background - Red, Green & Gold Border
 139 50 7 3/4" Rsp Mold 255 Plate - Green Luster W/ Dog Wood & Pink Rose Decor
 140 230 Rsp Creamer & Sugar - Green Tones - Mill Scene Decor - Unique Mold - Pro Repair To Top Of Sugar
 141 300 9 1/2" Rsp Mold 17 Footed Bowl - Light Green Satin Tones W/ Pink Poppy Decor



142 400 10 3/4" Rsp Mold 157 Bowl - Yellow & Blue W/ Bluebird Scenic Decor - Same As Pictured In Gaston Book I, Pg.81 - Hairline Repair
 143 450 10 1/4" Rsp Bowl - Light Green W/ Red Tear Drop Border & Gold Molded Roses - Pink Rose Decor - Satin Finish
 144 225 10 3/4" Rsp Bow Tie Mold Plate - Cream & Lavender Satin Finish W/ Pink Rose Decor - Nice
 145 800 10 1/4" Rsp Medallion Mold Master Berry And (6) Matching Berry Dishes - Old Man In The Mountain Scenic Decor!
 146 150 (4) 8 1/2" Rsp Mold 202 Plates - Brown Tones W/ Pink Poppy Decor

147 375 10 1/2" Rsp "Acorn" Mold 1 Bowl - Green Tones W/ Red Rose Decor
 148 150 10 1/2" Rsp Bowl - White Background W/ Fruit Decor - Yellow & Green Border
 149 150 Unmarked Prussia Stipple Mold Creamer & Sugar - Cream & Green Colors W/ Yellow & Pink Rose Decor
 150 180 10" St. Killian Master Bowl & (6) Matching Berry Dishes - Yellow Background W/ Green Border - Various Monk Scenes
 152 275 4 1/2" Unmarked Prussia Mold 910 Vase - Brown Tones, Turkey Scene Decor
 152 600 Rsp Mold 568 Creamer & Sugar - White & Green W/ Cottage & Mill Scene Decor - Rare Mold!
 153 200 11 1/2" Rsp Carnation Mold Dresser Tray - White W/ Gold Stencil Highlights - Large Pink Poppy Decor
 154 600 9" Rsp Mold 657 Chocolate Pot - White And Light Green W/ Stylized Swan Decor - Satin Finish
 155 1900 Beautiful! 10 1/2" Rsp Ribbon & Jewel Mold Two Handled Cake Plate - green Luster Background W/ Heavy Gold & Opal Jewels - Dice Throwers Scenic Decor - A Musl!
 156 175 9" Rsp Mold 655 Chocolate Pot - Cream, Lavender Luster Finish W/ Fruit Decor - Spout Hairline
 157 250 10 1/2" Unmarked Prussia Style Leaf Mold Bowl - Green, Bronze & Tiffany Colors W/ Portrait Of Flossie
 158 325 8 3/4" Rsp Medallion Mold Plate - Cream Center W/ Blue Bird On Gold Border - Swan Medallions - Floral Center - Slight Gold Wear
 159 500 12" Unmarked Prussia Mold 343 Two Handled Cake Plate - Great Cobalt Blue W/ Yellow Jonquil Decor & Perfect Gold Highlights

160 170 8 1/2" Rsp Hidden Image Mold Plate - Pink Tones W/ Wild Floral Decor
 161 100 7 3/4" Unmarked Prussia Mold 343 Bowl - Perfect Cobalt Blue W/ Yellow Jonquil Decor And Nice Gold Highlights
 162 250 9" Unmarked Prussia Mold 343 Plate - Nice Cobalt Blue W/ Yellow Jonquil Decor And Gold Highlights
 163 90 6" Rs Steeple Mold 9 Card Dish - White W/ Cobalt Blue Floral Decor
 164 10 8 3/4" Unmarked Prussia Plate - Rs Steeple Mold 10, Cobalt Blue With White Flowers Tinted Pink With Long Green Leaves - Two Hairlines
 165 300 9" Unmarked Prussia Mold 343 Plate - Cobalt Blue W/ Jonquil Floral Decor - Great Gold Stencil Highlights
 166 90 9 1/2" Rs Steeple Mold 4 Two-handled Cake Plate - Cobalt Blue Shading To White
 167 120 Rsp Mold 607 Pedestal Creamer & Sugar - White & Light Green Luster W/ Pink Floral Decor
 168 450 4 3/4" Royal Vienna Ball Shaped Vase - Yellow & Lavender Background W/ Lebrum I Portrait - Red Border
 169 525 9" Rsp Mold 546 Chocolate Pot - Cream & Green W/ Reflecting Floral Decor - (4) Matching Cups
 170 650 10 1/2" Rsp Mold 55 Bowl - Cream Center W/ Two Tone Green Border & Gold Stencil Highlights - Rose Decor - Satin Finish
 171 90 3 3/4" Rs Germany Miniature Vase - Dark Green Background W/ Cavalier Scene
 172 425 (6) 5 1/2" Rsp Icicle Mold Berry Dishes - Green & White Colors W/ Old Man In The Mountain Scenic Decor
 173 100 8" Prov Saxe Two Handled Vase - Pearl White Luster Background W/ Queen Louisa Portrait
 174 225 11" Prov Saxe Two Handled Vase - White Luster Background W/ Scene Of Queen Louisa Walking
 175 250 (3) Piece Unmarked Prussia Mold 501 Tea Set - Green & Cream Tones W/ Pink Floral Decor - Tea Pot, Creamer & Sugar
 176 300 7" Rsp Mold 643 Cracker Jar - Cream & Green W/ Glass Bowl Decor
 177 150 6 3/4" Prov Saxe Relish Tray - Scene Of Woman Smelling Flower - yellow & Green Background W/ Pink Poppy Highlights - Cobalt Blue Trim - Mold Pictured In Gaston Book Iv, Pg.216



178 270 10" Prov Saxe Oval Shaped Bowl - Portrait Of Woman Holding Flowers - Yellow & Green Background W/ Poppy Highlights - Cobalt Blue Trim - Same Mold Pictured In Gaston Book Iv, Pg.216
 179 25 8 1/2" Rsp Mold 255 Plate - Green Luster W/ Dogwood Decor
 180 180 6" Crown Marked Pedestal Planter W/ Brass Flower Frog - White & Peach Color W/ Pink Rose Decor - Satin Finish
 181 270 10 1/4" Prov Saxe Pedestal Handled Ewer - Portrait Of Woman Smelling Rose - Yellow & Burgundy Background
 182 110 11 1/2" Rsp Dresser Tray - White & Gray Luster Finish W/ White Tulip Decor
 183 300 9" Prov Saxe Vase - Scene Of Woman Holding Fire W/ Dark Red & Cobalt Blue Color Border - Gold Floral Highlights
 184 1500 10" Rs Iris Mold Bowl - White & Green Satin Finish W/ Winter Season Decor - Pretty!
 185 90 12" Royal Saxe Two Handled Vase - White & Green W/ Portrait Of Young Girl

186 75 9 1/4" Unmarked Prussia Icicle Mold Chocolate Pot - Light Brown Tones W/ Wild Floral Decor - Rim & Lid Chip
 187 210 10" Rsp Mold 82 Master Bowl W/ (4) Matching Berry Dishes - Cream & Green W/ Glass Bowl Decor



115 1100 13 1/2" Rsp Mold 9 "Fleur-De-lys" Celery Tray - Brown Tones, Fall Season Portrait!
 116 375 9 1/4" Rsp Carnation Mold Master Bowl W/ (6) Matching Berry Dishes - White Satin W/ Lavender Highlights - Rose Decor

117 650 10 1/2" Rsp Mold 964 Two Handled Covered Urn - White & Tiffany Finish W/ Pink & White Rose Decor - Satin Finish - Opal Jewels - Nice!
 118 75 12 1/4" Unmarked Prussia Medallion Mold Celery Tray - White & Green W/ Spilled Basket Decor
 119 190 12" Rsp Mold 304 Celery Tray - Swan & Evergreen Scenic Decor - Luster Finish
 120 350 9 3/4" Rsp Mold 507 Chocolate Pot & (3) Matching Cups & Saucers - brown Tones W/ White Poppy Decor
 121 420 9 1/4" Rsp Pedestal Two Handled Vase - Green Tones W/ Easter Lily Decor - Very Elegant Shape!
 122 190 4 1/2" X 5" Rsp Handled Basket - White & Green W/ Pink Rose Decor - satin Finish - Tiny Factory Nick On Base

123 225 (4) Rsp Carnation Mold Coffee Cups & Saucers - White & Light Green W/ Rose Decor - Satin Finish - (2) Extra Saucers
 124 350 Unmarked Prussia Lily Mold Chocolate Cup & Saucer - Iridescent Bronze Tiffany Border W/ Potocka Portrait - Very Rare!
 125 2150 8 1/2" Rsp Mold 906 Vase - Green Tones, Lion & Lioness Scenic Decor - Very Rare!
 126 75 8 3/4" Unmarked Prussia (Steeple Mold 7) Plate - Cream Center W/ Yellow Rose Decor - Red Border W/ Gold Highlights - Unseen Chip On Backside
 127 750 5" X 9" Rsp Mold 633 Two Handled Covered Cracker Jar - Rare Threescene Turkey, Barnyard & Swallow Decor - Luster Finish
 128 3100 Fantastic! 11" Rsp Medallion Mold Bowl - Cream Center W/ Rose Decor - Perfect Cobalt Blue Border And



188 175 8 1/4"
Prov Saxe Two
Handled Pillow Shaped
Vase - Green Luster
Background W/ Scene
Of Woman Holding
Blue Birds
189 1900 11 1/2"
Rsp Carnation Mold
Dresser Tray - Light
Yellow W/ Lavender
Highlights - Spring
Season Decor - Satin
Finish - Nicel
190 250 6 3/4"

Royal Saxe Two Handled Vase - Iridescent Tiffany Background
W/ Enameled Poppy Decor - Very Unique!

191 120 10 1/2" Rsp Shell Mold Bowl - White &
Lavender Luster Finish W/ Ivy & Pink Rose Decor - Mold 20
192 400 4 1/2" Unmarked Prussia Iris Mold Variation
Covered Butterdish - cream & Green W/ Floral Decor - Original
Insert - Fintal Chip
193 140 6 3/4" Royal Saxe Two Handled Vase - Green
Luster Background W/ Portrait Of Young Woman
194 170 7" Rsp Mold 348 Bowl - White & Iridescent
Brown Satin Finish W/ White Rose Decor
195 500 7" Rsp Jewel Mold Two Handled Pedestal
Vase - White & Tiffany Finish W/ Pink & White Rose Decor -
Satin Finish

196 125 10" St.killian Bowl - Light Blue W/ Pink Border
- Scene Of Man Standing And Woman Sitting
197 350 9" Unmarked Prussia Bow Tie Mold Chocolate
Pot - White Luster W/ Pink Floral Decor & Gold Bow Highlights
198 275 Unmarked Prussia Bow Tie Mold Salt &
Pepper Shakers - White Luster W/ Pink Floral Decor
199 250 11 1/2" Prov Saxe Plate - Portrait Of Woman
Holding Two Roses 014 Yellow Background And Red Border -
Large Poppy Highlights - Smaller Version Shown In Gaston Book
Iv, Pg. 217

200 150 10" Prov Saxe Club
Shaped Chocolate Pot - White W/ Portrait
Of Napoleon

201 180 8" Prov Saxe Plate -
Portrait Of Woman Smelling Rose On
Yellow Background And Red Border -
Pictured In Gaston Book Iv, Pg.217
202 120 9 1/2" Rsp Mold 202 Two
Handled Cake Plate - Cream W/ Iridescent
Border - Ivy & Dogwood Blossom Decor -
Satin Finish - Pictured In Gaston Book Iii,
Pg.72

203 125 3 1/2" Royal Bayreuth
Tapestry Pinch Spout Creamer - Woman W/
Horse Scenic Decor

204 170 10 1/4" Prov Saxe Bowl -
White W/ Royally Portraits - Companion
Piece To Items Pictured In Gaston Book Iv,
Pg.221

205 140 10" St.killian Handled
Divided Bowl - Stag Scene Decor W/ Dark
Green Border

206 150 3 1/2" Royal Bayreuth
Rose Tapestry Pinch Spout Creamer

207 130 11" Royal Bayreuth Dresser Tray - Blue,
Green & Brown Tones W/ Castle Scene Decor
208 130 (5) Piece Unmarked Germany Tea Set - Tea
Pot, Creamer, Sugar, Toothpick Holder & Tray - Portraits Of
Young Women On Dark Pink & Yellow Background

209 170 (2)
15 1/2" Prov Saxe Two
Handled Pedestal
Vases - Large

Classical Kaufmann
Scenes W/ Traditional
Surrounding Colors
210 60 4"

Royal Bayreuth Figural
Mustard Pot - Lobster
211 90 4 3/4"

4" Rs Germany Oval
Shaped Nut Dish -
Brown Tones W/
Scene Of Woman
Sitting With Dog
212 140 7"

Royal Bayreuth Figural
Water Pitcher - Lobster
- Crack By Claw
213 100 (2)

7" St.killian Vases W/
Boucher Scenes -

Green & Red Color
Highlights
214 70 8 1/
4" Rs Steeple Floral
Mold Plate - Green
Marble Background W/
Colored Floral
Highlights
215 30 13"
Prov Saxe Plate, Gold
Trim , Cream
Background, Yellow
Roses Decor, Mark 20
- Pic. Of Mold On
Pg.172, Gaston Book 11

216 70 7 3/4" Rs Germany Plate - Cavalier Scene W/
Light Green Luster Border & Gold Highlights

217 70 7" Rs Suhl Mold 2 Vase - Large Pink Floral
On Black Background

218 1350 Extremely Rare! 13" X 9 1/4" Rs Steeple Wall
Plaque - Brown Tones W/ Flossie Portrait - Nice Condition!

219 25 31/2" Germany Mug - White W/ Lion &
Lioness Scenic Decor

220 5 3 1/2" Germany Mug - White W/ Tiger &
Tigriss Scenic Decor - Rim Chip

221 25 31/2" Germany Mug - White W/ Lion &
Lioness Scenic Decor

222 35 2 3/4" Germany Coffee Cup - White W/ Tiger
& Tigriss Scenic Decor

223 30 2 3/4" Germany Coffee Cup - White W/ Lion &
Lioness Scenic Decor

224 35 2 3/4" Germany Coffee Cup - White W/ Tiger
& Tigriss Scenic Decor

225 40 31/4" Unmarked Germany Childs Pitcher -
White & Pink W/ Lion &
Lioness Scenic Decor

226 20 Unmarked Germany Childs Cup & Saucer -
Green Tones W/ Lion Decor -sauce W/ Crow's Foot

227 50 9 1/4" Rs Germany Relish Tray - Gray Tones
W/ Swan Decor

228 225 10" Prov Saxe Bowl -
Scene Of Young Sutor Talking With Two Young
Women - Brown & Red Background

229 60 10 1/2" Unmarked
Prussia Two Handled Cake Plate - Light Blue Center
W/ Yellow Border - Floral Decor - Steeple Mold 26

230 230 8 1/4" Prussia Lion
Mark Plate - Cream Color Background W/ Gibson
Girl In Blue Hat Portrait

231 110 Prov Saxe Creamer &
Sugar - Pink, Yellow & Green W/ Robin Decor

232 50 3 1/2" Rs Germany
Syrup Pitcher - Light Pink & Yellow W/ Hummingbird
Decor

233 150 (5) Piece Prov Saxe
Dresser Set - Yellow & Green W/ Robin Decor -(2)
Powder Boxes, Pin Tray & (2) Candlestick Holders

234 25 8" Prov Saxe Club
Shaped Handled Nappy - Purple, Yellow & Green W/
Robin Decor

235 70 9 3/4" Rs Germany
Two Handled Cake Plate - Yellow & Green
Background W/ Pheasant Decor

236 100 9 3/4" Rs Germany Two Handled Cake Plate -
Green Background W/ Bird Of Paradise Decor

237 160 11 1/4" Prov Saxe Plate - Portrait Of Young
Girl W/ Flower Blossoms In Hair - Burgundy Background W/
Light Blue Highlights

238 Bo 4" Rs Tillowitz Covered Flower Frog - Blue
Luster Background W/ Parrot Decor

239 40 7" Rs Germany Octagon Shaped Two-handed
Bowl - Orange Panels Alternating With Parrot Decor

240 110 8 1/2" Rs Germany Figural Wall Pocket -
Parrot Motif W/ Iridescent Bronze And Gold Highlights - Blank
Pictured In Gaston Book I, Pg.202

241 85 5 3/4" Rsp Three Footed Bowl - Light Green
W/ Pink Rose Decor

242 110 4 1/4" Rs Germany Wall Match Holder - Light
Green W/ Pink Floral Decor

243 100 11" Unmarked Prussia Two Handled Cake
Plate - Cream W/ Cobalt Blue Border - Violet Floral Decor -
Luster Finish

244 130 10 1/2" Crown Mark, Lily Mold Bowl - White &
Lavender W/ Floral Decor

245 450 7 3/4" Es Germany Dragon Handled Ewer -
Cream & Blue W/ Fine Reticulated Panels W/ Gold Underneath -
Much Nice Then One Pictured In Gaston Book Ii, Pg-147

246 225 4 1/4" Unmarked Royal Bayreuth Figural
Creamer - Iris

247 70 9 3/4" Rs Germany Two Handled Cake Plate -
Brown Tones W/ Old Cottage Scene



- 248 275 9 1/4" Royal Bayreuth Tomato Master Bowl & (6) Matching Berry Dishes
 249 35 3 1/2" Germany Shaving Mug - White W/ Green Band Highlights - Scene Of Woman And Child
 250 70 (17) Piece Unmarked Germany Childs Tea Set In Original Box - White W/ Molded Swirl Design - Tea Pot, Creamer, Sugar, (6) Plates, (6) Cups And Saucers, (2) Cake Plates
 251 100 4" Rs Germany Toothbrush Holder - White W/ Pink Rose Decor
 252 100 10" Rs Germany Two Handled Cake Plate - Silhouette On White Of Young Woman, Yellow Border W/ Silver Overlay
 253 40 4" Unmarked Royal Bayreuth Figural Lobster Creamer
 254 70 6" Rs Germany Toothbrush Holder - White, Gray & Brown W/ Pink Rose Decor
 255 150 (2) 4 3/4" Rs Steeple Vases - Pink Glazed Marble Background W/ Blue & White Floral Decor - Style Is Very Unusual
 256 80 (2) 2 1/2" Unmarked Royal Bayreuth Figural Frog Creamers
 257 110 7" Royal Bayreuth Figural Water Pitcher - Coachman
 258 50 7 1/4" Prov Saxe Scalloped Handled Bowl - Classical Scene W/ Cream & Blue Border
 259 410 Rare 6 1/4" Unmarked Royal Bayreuth Figural Water Pitcher - Pelican
 260 15 5 3/4" Unmarked Germany Character "Face" Pitcher - Dirty White Luster Finish
 261 170 (2) 8 1/4" Royal Bayreuth Vases - Yellow W/ Brown Border & Fox Hunt Scene Decor
 262 30 6" Selesia Plate - White W/ Potocka Portrait And Gold Trim
 263 25 8" Rs Germany Slotted Spoon Holder - White & Green W/ White Rose Decor
 264 350 7 1/2" Square Germany Tapestry Picture Frame - Nice Pink Floral W/ Gold Tracing Highlights - Attractive
 265 100 9 1/2" Royal Saxe Bowl - White & Green Colors W/ Floral Highlights - Center Portrait Of Girl In Green Dress And Big Hair
 266 175 5 3/4" Royal Bayreuth Rose Tapestry Berry Dish - Very Rare Sterling Silver Color
 267 200 4" Rs Germany Miniature Vase - Green Tones W/ Old Mill Scene Decor
 268 70 (2) 6 1/2" Unmarked Prussia Style Vases - Brown Tones W/ Old Village Decor - (1) With Hairline
 269 35 (6) 4" Rs Germany Oval Shaped Nut Dishes - Green Tones W/ Pink Rose Decor
 270 100 4" Royal Bayreuth Pinched Spout Tapestry Creamer - Pink American Beauty Roses
 271 10 5 3/4" Prov Saxe Square Shaped Dish - Yellow & Green W/ Stage Coach Scene
 272 50 4" Royal Bayreuth Creamer With Brittany Women, Green Shades
 273 30 6 1/2" St.killian Plate - Classical Scene W/ Orange & Green Border
 274 70 10" St.killian Bowl - Classical Scene W/ Yellow & Orange Border
 275 70 7" Unmarked Germany Figural Santa Clause Cookie Jar
 276 25 6 1/4" Prov Saxe Plate - Cream W/ Red & Green Border - Classical Kaufmann Scene
 277 30 (3) Rs Germany Style Ladies - Rose Decor
 278 60 9" D. Royal Bayreuth Plate - Peasant Musicians Playing Violin And Horn



- 279 30 5" Prov Saxe Three Legged Flower Vase - Light Yellow W/ Tree & Building Scene - Luster Finish
 280 490 10" Prov Saxe Master Berry Bowl & (6) Matching Berry Dishes - White W/ Portraits Of Royalty - Companion Piece To Items Pictured In Gaston Book Iv, Pg.221
 281 90 5" X 8" Rs Germany Two Handled Cracker Jar - Green Tones W/ Collage Scene - Deco Mold
 282 260 9 1/2" Rs Germany Chocolate Pot & (4) Matching Cups & Saucers - green Tones W/ Collage Scene - Pictured In Gaston Book I, Pg. 1,98 - Rim Repair
 283 55 4" Rs Germany Miniature Vase - Green Tones W/ Collage Scene
 284 35 Rs Germany Mustard Pot - Green Tones W/ Collage Scene - Deco Mold
 285 45 Rs Germany Creamer & Sugar - Green Tones W/ Collage Scene - Deco Mold
 286 110 Rsp Mold 286 Creamer & Sugar - Green & Cream Colors W/ Pink Poppy Decor
 287 90 9 3/4" Rs Germany, Lettuce Mold Bowl - Exceptional Gold Interior W/ Silvery Gold Exterior
 288 25 4 1/2" X 9 1/2" Selicia Fooled Bowl - White & Peach Luster Finish W/ Yellow Rose Decor
 289 30 7 1/4" Royal Saxe Vintage Mold Plate - Brown & Green W/ Gold Highlights
 290 60 Rs Germany Creamer & Sugar - Light Yellow & Brown Tones W/ Spilled Basket Decor
 291 60 10 3/4" Rs Steeple, "Stipple Mold Variation" Bowl - Cream & Green W/ Rose Decor
 292 70 10 3/4" Rs Steeple, "Stipple Mold Variation" Bowl - Blue W/ Rose Decor
 293 50 8 3/4" Rsp Medallion Mold Plate - Old Man In The Mountain Scene -original Was Missing A Large Piece, Has Been Pro Repaired
 294 150 Unique Miniature Childs Tea Set - Unmarked Germany Tea Pot, Creamer, Sugar, (2) Cake Plates & (2) Cups & Saucers - Yellow & Purple W/ Gold Highlights - Victorian Portrait Scenes
 295 60 (11) Piece Rs Germany Tea Set - Burnt Orange W/ Half Sunflower Design - Tea Pot, Creamer, Sugar & (8) Matching Cups
 296 60 12" Unmarked Prussia Round Charger - Two Tone Blue W/ Embossed Floral Decor
 297 225 9" Crown Marked Chocolate Pot W/ (6) Cups And Saucers - Dark Gray And Cream W/ Pink Rose Decor
 298 40 10 1/2" Rs Steeple Mold 2 Bowl - White & Green W/ Floral Decor
 299 80 10 1/2" Rs Steeple Mold 2 Bowl - Light & Dark Green W/ Pink Floral Decor
 300 110 11" Royal Bonn Two Handled Vase - Cobalt Blue W/ Pansy Decor
 301 100 7" Prov Saxe Two Handled Vase - Yellow W/ Red Luster Highlights -portrait Of Woman Smelling Rose - Blossom Mold Neck - Sm Hairline, Trim
 302 50 10" Oscar Schlegelmilch Bowl - Cream Center W/ Orange Border & Gold Rope Twist - Orange Rose Decor
 303 20 Limoges Creamer & Sugar - Square Shaped W/ Handpainted Floral Decor (Artist Signed) - Cream W/ Orange Rose Decor
 304 140 4 3/4" Rs Germany Basket - Brown Tones W/ Old Village Scene
 305 90 9 1/4" Royal Vienna Two Handled Vase - Green & Pink Tones W/ Lebrum II Portrait - Repair To Rim
 306 40 8" Wittelsbach Oval Shaped Nut Dish W/ (6) Matching Round Individual Dishes - White W/ Green Leaf & Pink Rose Decor
 307 50 7" Royal Saxe Toothbrush Holder - White W/ Green Trim - Rose Decor - Tiny Chip
 308 180 13" Unmarked Prussia Lily Mold Bread Bowl - Cobalt Blue Center W/ Cream Border & Poppy Highlights
 309 190 4" X 8" Signed Jpl Limoges Squal Shaped Handled Jug - Green Tones W/ Dark Pink Rose Decor

- 310 325 10" Prov Saxe Three Handled Vase - Portrait Of Woman Holding Fire - red, Aqua & Gold Color Highlights
 311 80 10 1/2" Unmarked Prussia (Steeple Mold 9) Bowl - Yellow W/ Floral Decor - Unique Border Colors Of Yellow, Blue, Pink & Iridescent Purple
 312 60 4 1/2" X 8" Unmarked Nippon Two Handled Vase - Green & Gold Fish Scale Background W/ Large Pink Chrysanthemum Floral Decor - Nice
 313 40 6" Prov Saxe Two Handled Vase - Tan Tones W/ Red Rose Decor
 314 25 10 1/2" Unmarked Prussia Pierced Handled Cake Plate - White, Blue & Cream W/ Floral Decor
 315 90 6 1/2" Signed Bavaria Cider Pitcher W/ (6) Matching Tumblers -yellow Background W/ Blackberry Decor (Artist Signed Roser)
 316 25 7" Royal Saxe Aladdin Shaped Gravy Dish - White W/ Chrysanthemum Decor
 317 50 2 1/2" Rs Germany Covered Ink Well - Brown Tones W/ Heavy Gold & Floral Decor - Artist Signed
 318 160 9" Unmarked Limoges Chocolate Pot & (6) Matching Cups & Saucers -light Green And White W/ Pink Floral Decor - Gold Trim
 319 10 8 3/4" Prov Saxe Relish Tray - Gray Tones W/ Snowball Decor - Sali14 Finish



- 320 50 2 3/4" Rs Germany Covered Ink Well - Brown Tones W/ Pink & Yellow Rose Decor
 321 10 Rs Germany Creamer & Sugar - Yellow Tones W/ Pink Floral Decor
 322 30 3" Unmarked Germany Ovoid Shaped Bell - Light Green Tones W/ Snowball & Rose Decor
 323 10 4" Rs Germany Ash Tray - Light Brown Tones W/ Orange Poppy Decor
 324 20 Germany Medallion Mold Mustard Pot - Light Brown W/ Poppy Decor
 325 15 2 3/4" Rs Germany Syrup Pitcher - Light Brown Tones W/ Orange Poppy Decor
 326 60 2 1/2" X 4" Rs Germany Card Holder - Light Yellow W/ Snowball & Rose Decor
 327 35 3 3/4" Rs Germany Six Sided Shaving Mug - Green Tones W/ Orange Rose Decor
 328 25 Rs Germany Creamer & Sugar - Light Green W/ Violet Floral Decor
 329 20 7 1/2" Rs Germany Two Handled Round Tray - Green Tones W/ White Blossom Decor - Satin Finish
 330 15 2 1/4" Rs Germany Two Handled Toothpick Holder - Light Green W/ Pink Rose Decor
 331 30 15 1/2" Rs Tillowitz Oblong Tray - Gray Tones W/ Pink Blossom Decors - Satin Finish
 332 35 9 1/2" Rs Tillowitz Rectangular Shaped Tray - Heavy Floral Etched Gold Overlay
 333 10 8" Rs Germany Handled Dish - Green Luster Background W/ White Blossom Decor
 334 40 6 3/4" Rs Germany Heart Shaped Card Tray W/ Cut Out Parrot In Handle - Orange Background W/ Pink Poppy Decor
 335 10 4 1/4" X 5" Rs Germany Eight Sided Basket - Blue Luster Background W/ Stylized Gold Floral Decor





- 336 35 Prov Saxe Salt & Pepper Shakers - Brown Tones W/ Rose Decor
- 337 10 9" Rs Germany Bowl - Brown Tones W/ Peach Colored Rose Decor
- 338 55 7 1/2" Rills Willowz Footed Bowl Shaped Strainer On Matching Plate - brown Tones W/ Pink Blossom Decor
- 339 20 9 1/2" Unmarked Germany Two Handled Cake Plate - Cream Tones W/ Snowball & Rose Decor - Gold Border Highlights
- 340 60 Royal Bayreuth Three Handled Toothpick Holder - Brown W/ Musician Scenic Decor
- 341 70 8 1/4" Royal Bayreuth Pierced Border Plate - Ivory Hand Painted W/ White Rose Decor
- 342 90 6" Royal Bayreuth Vase - Brown Tones W/ Gazebo Scenic Decor
- 343 450 10 1/2" Rsp Mold 85 Bowl - White & Lavender Satin W/ Red Border Highlights - Pink Poppy Decor - Very Pretty?
- 344 50 10 1/2" Royal Bayreuth Two Handled Cake Plate - Light Green W/ Pink & White Rose Decor
- 345 225 12 1/2" Rsp Stipple Mold Bread Bowl - Yellow & Green W/ Fruit Decor
- 346 200 12" Rsp Unmarked Germany Oval Shaped Tapestry Tray - Floral Border W/ Classical Scene Decor
- 347 300 12" Rs Steeple Mold 7 Two Handled Bread Bowl - Pink Background W/ Pink Rose Decor - Gold Trim Highlights
- 348 20 Rs Germany Two Handled Toothpick Holder - White & Light Green Luster Finish W/ Rose Decor
- 349 170 7 3/4" Rsp Plate - Cream Center W/ Pink Rose Decor - Green Tiffany Leaf Border - Satin Finish
- 350 40 Unmarked Prussia Stipple Mold Two Handled Cracker Jar - Cream & Green Colors W/ Yellow & Pink Rose Decor - Finish & Rim Repair
- 351 275 10" Unmarked Prussia Pierced Border Plate - Pink Center W/ Carnation Floral Decor - Pictured In Gaston Book Iv, Pg-158
- 352 170 11" Rsp Unique Mold Bowl - Cream Satin Finish W/ Peach Colored Rose Decor - Nice
- 353 90 12" Unmarked Germany Three Section Handled Dish - Light Blue & Cream W/ Pink Floral Decor
- 354 160 12" Rsp Ribbon & Jewel Mold Dresser Tray - Yellow & Green Tones W/ Wild Floral Decor - Opal Jewels
- 355 110 12" Rsp Stipple Mold Celery Tray - Yellow & Green W/ Pink Rose Decor
- 356 90 8 1/4" Rsp Plate - Cream & Green Satin Finish W/ Snowball & Blossom's Decor
- 357 300 9 3/4" Rs Germany (Prussia Mold 12a) Bowl - White Satin W/ Floral Decor
- 358 110 10 1/4" Rsp Mold 90 Bowl - White W/ Pink Satin Highlights - Pink Rose Decor
- 359 100 8 1/4" Rs Germany Plate - Pheasant & Old Cottage Scene Decor

- 360 110 13 3/4" Rsp Mold 252 Celery Tray - Cream Background W/ Rose & Daisy Decor - Gold Stencil Highlights - Satin Finish
- 361 300 8 1/2" Rs? Carnation Mold Plate - Green Tones W/ Large Pink Poppy Decor - Gold Trim Highlights
- 362 110 10" Rsp Mold 208 Bowl - Cream Background W/ Large White Floral Decor - Satin Finish
- 363 90 10 1/2" Rsp Bowl - Green Tones W/ Gold Trim - Acorn Branch Decor
- 364 70 11 1/2" Rs Steeple Mold Tray - Blue Background W/ Wild Rose Decor
- 365 300 7 1/2" Rsp Three Hapided Basket - Cream Colored W/ Poppy Decor - satin Finish
- 366 90 9 3/4" Rsp Mold 304 Two Handled Cake Plate - Cream & Green W/ Reflecting Floral Decor
- 367 150 9" Rsp Plume Mold Chocolate Pot - Pink & White W/ Floral Decor
- 368 150 Old Ivory #69 Creamer & Sugar
- 369 60 6 1/2" Rsp Mold 82 Three Footed Bowl - Cream & Green W/ Glass Bowl Decor
- 370 70 10" Old Ivory #11 Bowl
- 371 100 9 3/4" Rsp Mold 82 Two Handled Cake Plate - Cream & Green W/ Glass Bowl Decor



- 372 140 Old Ivory #15 Salt & Pepper Shakers
- 373 125 11" Rsp Mold 82 Two Handled Cake Plate - Cream & Green W/ Glass Bowl Decor
- 374 30 Old Ivory #200 Tea Pot - Rim Repair
- 375 400 11 1/2" Rsp Mold 537 Tankard - Cream & Green W/ Snowball & Rose Decor
- 376 200 3 1/2" Unmarked Royal Bayreuth Hand Painted Ivory Salt & Pepper Shakers - Pierced Bottoms - White Rose Decor
- 377 150 9 1/2" Rsp Chocolate Pot - White & Cream W/ Leaf & Blossom Decor
- 378 350 10 1/2" Royal Bayreuth, Hand Painted Ivory Pierced Edge Bowl - large White Rose Decor
- 379 60 8 1/4" St- Killian Plate - Green & Gold Border W/ Classical Scene
- 380 130 13 1/2" Rsp Mold 82 Celery Tray - Cream & Green W/ Glass Bowl Decor
- 381 40 Rs Poland Gravy Dish W/ Matching Underplate - Brown & Cream Tones W/ Peach Colored Rose Decor

- 382 140 (4) Unmarked Prussia Mold 627 Cups & Saucers - Blue, Cream & Pink W/ Floral Decor
- 383 110 Rsp Mold 643 Mustard Pot - Cream & Green W/ Glass Bowl Decor
- 384 150 3 3/4" Unmarked Prussia Shaving Mug - White W/ Iridescent Bronze Border - Floral Decor
- 385 70 6 3/4" Rsp Mold 108a Plate - Cream W/ Tiffany Highlights - Rose Decor - Satin Finish - Pictured In Gaston Book Ii, Pg.64
- 386 130 3 1/2" Rsp Shaving Mug - Light Yellow & Green W/ Pink & White Blossom Decor
- 387 85 10 1/2" Unmarked Prussia Lily Mold Bowl - Light Green W/ Pink & Yellow Rose Decor
- 388 140 4" Unmarked Prussia Steeple Mold 14 Shaving Mug - White & Blue W/ Pink Floral Decor
- 389 60 8 3/4" Rsp Plate - White & Green Satin Finish W/ Ivy & Blossom Decor

- 390 120 3" Unmarked Prussia Iris Mold Variation Shaving Mug W/ Beveled Mirror - White & Green W/ Pink Rose Decor
- 391 350 5 3/4" Rsp Mold 542 Cider Pitcher - Cream W/ Poppy Decor - Pictured In Gaston Bk.ii, Pg.103
- 392 180 3 1/2" Rsp Stipple Mold Shaving Mug W/ Beveled Mirror - Tan & Green W/ Poppy Decor
- 393 70 (6) 5" Rsp Mold 256 Berry Dishes - Light Green Luster W/ Dogwood & Pink Floral Decor
- 394 450 4" Rsp Iris Variation Mold Scuttle Mug W/ Beveled Mirror - White & Green W/ Pink Poppy Decor
- 395 70 Rsp Mold 548 Footed Chocolate Cup & Saucer - Cream & Pink W/ Ivy & Berry Decor
- 396 10 Rsp Salt & Pepper Shakers - White W/ Floral Decor - Different Molds
- 397 275 (4) Rsp Mold 643 DemiTasse Cup & Saucer - Cream & Green W/ Glass Bowl Decor
- 398 70 Rsp Mold 610 Pedestal Cup & Saucer - Blue & Crep14 W/ Pink Floral Decor
- 399 110 (2) Rsp Mold 474 Demi Tasse Cups & Saucer - White & Green Satin W/ Green Ivy & White Blossom Decor - (2) Extra Saucers
- 400 110 Rsp Coffee Cup & Saucer - Light Green Satin Finish W/ Ivy & Berry Decor

Welcome New Members

William E. Davis & Edna Devito
45 Masseth Street
Rochester, New York 14606

Richard Miller
11180 S.R. 10
Argos, IN 46501

Gil Townsend
8227 Ellerson Woods Circle
Mechansville, VA 23111

Voneta Quinter
508 Lisle Street
Celina, OH 45822

Pamela & Phillip Michaleck
7415 Tanbark Lane
Fort Wayne, IN 46835

Larry & Patsy Bussard
118 Locust CT
Middletown, MD 21769

Ray White
16128 Homelight Ave.
Irving, IL 62051

Carol Schlegemilch
337 Brompton Road
Garden City South, NY 11530



CONVENTION 2004



July 29 - August 1

The Marriott features:

- *253 Deluxe Guestrooms & Suites - four diamond rating by AAA Mobile Guide
 - *60 room new Fairfield Inn & Suites adjacent to our property
 - *Complimentary Parking - large area to showcase the cars
 - *State of the Art Work-out Facility
 - *Popular local restaurant & lounge
 - *21,000 sq. ft. of Convention Space - including one of Indy's most elegant Ballrooms
 - *Indoor & Outdoor Pool, Swim spa, and a spacious Courtyard.
- The Indianapolis Convention will be the one you've been waiting for!
 We look forward to welcoming the all of you.
 Warm Regards from your friends at the Marriott. See you at Convention!

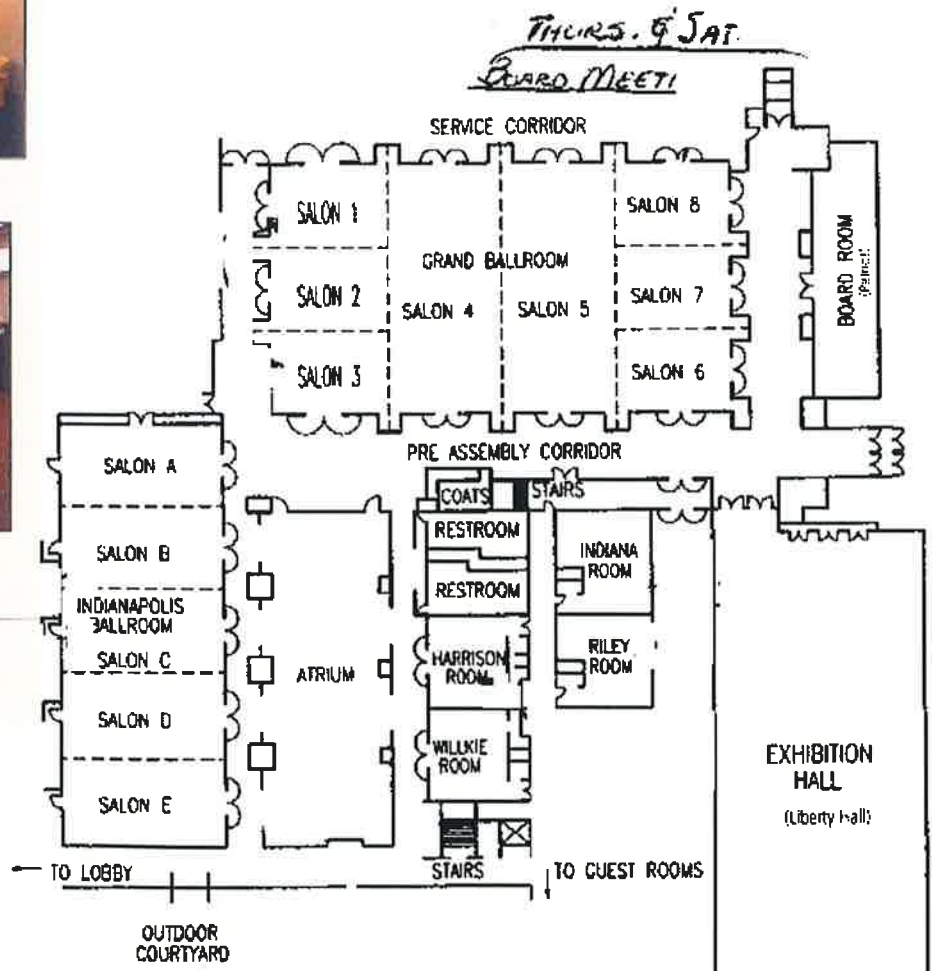


INDIANAPOLIS **Marriott**.EAST

7202 E. 21st Street
 Indianapolis, IN 46219
 (317) 352-1231 - Fax: (317) 352-9775
www.marriott.com

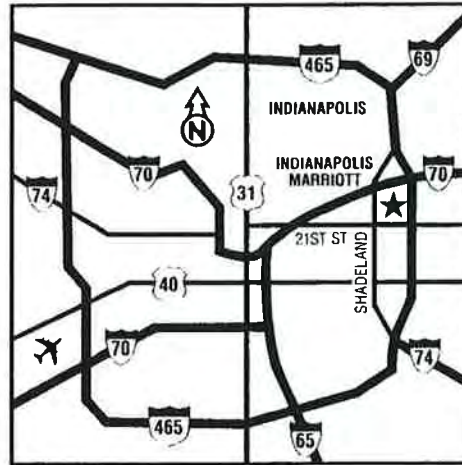
INDIANAPOLIS MARRIOTT EAST

7202 E. 21st Street - Indianapolis, IN 46219
 (317) 352-1231



INDIANAPOLIS **Marriott**

7202 E. 21st Street
Indianapolis, IN 46219
(317) 352-1231 - Fax: (317) 352-9775
www.marriott.com



LOCATION

- *Conveniently located on the east side of Indianapolis at the interstate of I-465 and I-70
- *Easy access to all downtown attractions, only minutes away on I-70 West
- *Near Ford Motor Company, Raytheon Systems Company and Western Select office complex

DIRECTIONS

From Indianapolis International Airport: East on Airport Expressway to I-70 East. Travel approximately 15 miles on I-70 to Exit 89 (Shadeland Ave.) and turn right. Turn left on 21st Street. Hotel is two blocks on left.

ACCOMMODATIONS

- *253 deluxe guest rooms and 4 suites
- *The Room That Works: 72 guest rooms designed for the business traveler
- *Concierge Level and Lounge
- *Nonsmoking and accessible rooms available
- *Individual climate control
- *Speakerphone with voice mail and data port
- *AM/FM alarm clock radio
- *Cable TV with in-room pay movies
- *In-room coffee, hair dryer, iron and ironing board

For details and reservations, call us direct at (317) 352-1231, your travel agent, or toll-free in the U.S. and Canada: 800-228-9290. (Travel agents only call: 800-831-1000).

RECREATION

- *Connecting indoor/outdoor pool with removable dome
- *Professional fitness center with state-of-the-art equipment and cardio theater technology
- *Whirlpool/Swim Spa
- *Game area with pool table
- *Golf and tennis nearby

ATTRACTIONS

- *Indianapolis Zoo
- *Indianapolis Motor Speedway
- *Indianapolis Museum of Art
- *The Children's Museum of Indianapolis
- *Eiteljorg Museum
- *IMAX Theater
- *Circle Centre Mall
- *Professional football, baseball and basketball

GUEST SERVICES

- *Commercial airport transportation
- *Free Parking
- *Concierge
- *Guest and valet laundry
- *Safe-deposit boxes
- *Gift Shop
- *Business center
- *Room Service
- *Soda, ice and vending machines